

A quality palette

LOUVRE acrylic is an artists' paint with a satin finish for all types of supports, it is water-soluble and is water resistant when dry. The range is composed of a palette of

- 1 44 colours in 80 ml tubes,
- 2 42 of which are available in 200 ml tubes and
- 3 30 of which are available in pots of 750 ml.

The price is the same for all of the LOUVRE colours.



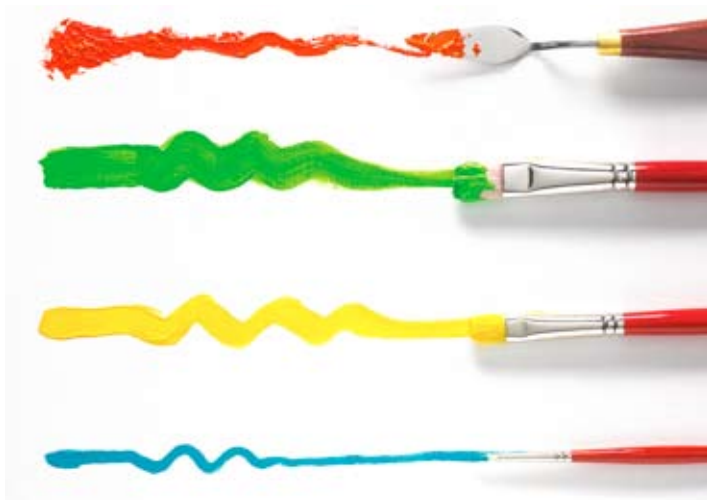
The 80 ml LOUVRE acrylic was designed for beginners who want to start-off with the essential colours. The 200 ml tubes and the 750 ml pots are designed for art students and artists who paint on large surfaces, and who therefore need larger amounts of **"fine art" paint at an affordable price:**

- > High pigment concentration (strong colours)
- > Lightfastness
- > Strong and supple acrylic binder that does not turn yellow in time

Use

Many painting styles:

Acrylic is a technique that allows various different means of expression. When dry, the pictorial film forms a joined element that remains supple and does not crack over time. This quality, unique to the "fine art" acrylics, enables the user to overlay the paste in thick layers. The trace of the stroke remains visible depending on the painting tool used; the relief effects do not fade, and can even be increased using gels with specific textures that will thicken the paste even more.



On the other hand, when very diluted, acrylic can also be used as an ink or a watercolour to create a rapid drying water-resistant wash. In this case, we recommend that you use absorbent or porous supports (paper, untreated wood, stone, etc.).

Acrylic drying:

As in all techniques, there is a difference between "touch dry" and "thoroughly dry", which is when all the water in the paint has evaporated. When applied in thin layers, the acrylic is touch dry within 15 to 30 minutes (when the temperature and humidity are "normal"). When applied thickly, it takes the acrylic twice as long to become touch dry, and it takes about a week for each millimetre of thickness of paint for the acrylic to become thoroughly dry.

Therefore you must not varnish a painting that is not thoroughly dry; otherwise white marks (mould) may appear due to water that is trapped beneath the varnish.

A wide variety of supports:

Unlike oil paint, tempera or even watercolour, acrylic can also be used on unusual supports, recovered materials, and natural and raw materials (stone, wood, etc.).

Supports preparation

For the paint to adhere perfectly and to last over time, it is important to take interest in the nature of the support and the preparation of its surface (raw, painted or varnished).

> Porous and crumbling supports

(plaster, flower pots, salt dough, clay, pressed wood, etc.)

The paint soaks into the support and loses its characteristics

Process: block, make the support waterproof

Product: acrylic binder with GESSO undercoat

> Smooth supports

(metal, plastic, glass, melamine, hardboard, etc.)

Process: Render the surface rough by sanding it (=allows the paint to adhere better) and apply an adhesive primer.

> The support is painted

The rule says: **«Always paint fat to lean» or... lean to lean or... fat to fat** or strip the surface, but never... **lean on fat**



Characteristics

In the interests of the consumer information, product characteristics (pigment, composition, covering capacity, light-fastness) are indicated on each tube. Colours are entirely intermixable.



Product certified as complying with toxicological analysis programme

Intermixibility

Light-fastness

Reference

Contents

Covering capacity

Barcode



A palette of 44 colours

 Light Naples yellow 887 - M *** □ PW6-PY42 80 ml - 200 ml - 750 ml	 Red violet 618 - M *** □ PR122-PV19 40 ml - 80 ml - 200 ml - 750 ml	 Veronese green shade 551 - M *** □ PW6-PG36 80 ml - 200 ml - 750 ml	 Burnt Sienna 481 - M *** ■ PB7-PR101-PBk9 40 ml - 80 ml - 200 ml - 750 ml
 Pale Lemon 237 - M ** ■ PW6-PY3 80 ml - 200 ml	 Pink 351 - M *** □ PW6-PV19 80 ml - 200 ml - 750 ml	 Warm green 534 - M *** □ PG7 40 ml - 80 ml - 200 ml - 750 ml	 Raw umber 478 - M *** ■ PB7 40 ml - 80 ml - 200 ml - 750 ml
 Lemon yellow 169 - M *** □ PY3 40 ml - 80 ml - 200 ml - 750 ml	 Pale violet 659 - M ** ■ PW6-PV23 80 ml - 750 ml	 Japanese green 569 - M ** □ PY3-PG7-PW6 80 ml - 200 ml	 Burnt umber 477 - M *** ■ PB7 40 ml - 80 ml - 200 ml - 750 ml
 Cadmium yellow hue (Prim. yellow) 153 - M *** □ PY74 40 ml - 80 ml - 200 ml - 750 ml	 Blue violet 604 - M ** ■ PV23 40 ml - 80 ml - 200 ml	 Bright green 554 - M *** □ PG7-PY74-PY3 40 ml - 80 ml - 200 ml - 750 ml	 Mouse grey 263 - M *** ■ PW6-PY42-PR101-PBk11 80 ml - 200 ml
 Cadmium yellow medium hue 195 - M *** □ PY73 80 ml - 200 ml	 Ultramarine blue 043 - M *** □ PB29 40 ml - 80 ml - 200 ml - 750 ml	 Cobalt green hue 523 - M *** ■ PY42-PBk11-PB15:3 40 ml - 80 ml - 200 ml	 Grey 250 - M *** ■ PW6-PBk11 80 ml - 200 ml - 750 ml
 Sahara yellow 194 - M *** □ PY65 40 ml - 80 ml - 200 ml - 750 ml	 Pastel blue 783 - M *** ■ PW6-PB29 80 ml - 200 ml - 750 ml	 Green oxide of chromium 542 - M *** ■ PG17 40 ml - 80 ml - 200 ml - 750 ml	 Payne's grey 261 - M *** ■ PB29-PBk9-PBk7 80 ml - 200 ml - 750 ml
 Orange 201 - M *** □ PY65-PR9 40 ml - 80 ml - 200 ml - 750 ml	 Cobalt blue hue 059 - M *** ■ PB29 - PB15:3 - PW6 80 ml	 Naples yellow hue 190 - M *** ■ PY42-PY3-PW6 40 ml - 80 ml - 200 ml - 750 ml	 Ivory black 269 - M *** ■ PBk9 80 ml - 200 ml
 Vermilion red 393 - M *** □ PR9 40 ml - 80 ml - 200 ml - 750 ml	 Tropical blue 091 - M *** □ PB15:0 40 ml - 80 ml - 200 ml	 Flesh tint 301 - M *** ■ PY42-PR101-PW6 40 ml - 80 ml - 200 ml - 750 ml	 Mars black 271 - M *** ■ PBk11 40 ml - 80 ml - 200 ml - 750 ml
 Cadmium red hue 313 - M *** □ PR112 80 ml - 200 ml	 Cyan (Prim. blue) 063 - M *** □ PB15:3 40 ml - 80 ml - 200 ml - 750 ml	 Yellow ochre 302 - M *** ■ PY42 40 ml - 80 ml - 200 ml - 750 ml	 Titanium white 008 - M *** ■ PW6 40 ml - 80 ml - 200 ml - 750 ml
 Crimson 340 - M ** □ PR170 40 ml - 80 ml - 200 ml - 750 ml	 Cerulean blue hue 040 - M *** ■ PB15:0 - PW6 - PBk11 80 ml - 200 ml	 Red ochre 306 - M *** ■ PR101 80 ml - 200 ml	 Gold 700 - *** □ 40 ml - 80 ml - 200 ml
 Magenta (Prim. red) 437 - M *** □ PV19 40 ml - 80 ml - 200 ml - 750 ml	 Turquoise blue 050 - M *** ■ PW6 - PG7 - PB15:0 80 ml - 200 ml - 750 ml	 Raw Sienna 482 - M *** ■ PY42-PR101 80 ml - 200 ml - 750 ml	 Silver 710 - *** ■ 40 ml - 80 ml - 200 ml

□ 13 transparent colours
■ 7 semi-transparent/semi-opaque colours
■ 24 opaque colours
M Colours which can be safely intermixed with each other

** 5 very permanent colours
*** 39 absolutely permanent colours, even when lightened

Additives and brushes

> Gesso Lefranc & Bourgeois

Gesso is a non-yellowing primer that dries in 30 minutes, it must be applied in thin layers and is a sub-layer for preparing porous and rigid surfaces (wood, plywood, etc ...). It may be coloured as an initial coating and should never be reapplied onto a painting.



> Additives, essential products for

- personalization and conservation of the painting
- mastering the brush stroke, aesthetic perfection



> Lefranc & Bourgeois also offers the artist a large range of brushes and painting knives.



CONCEPTION GRAPHIQUE WWW.ATIBULFR • PHOTOS AB-HOC LE MANS